

the pre-Angkor region took root and spread widely. These conditions are most certainly the reason our gold lotus ring was made, and it's fascinating to learn about the meanings it held for the person who wore it.

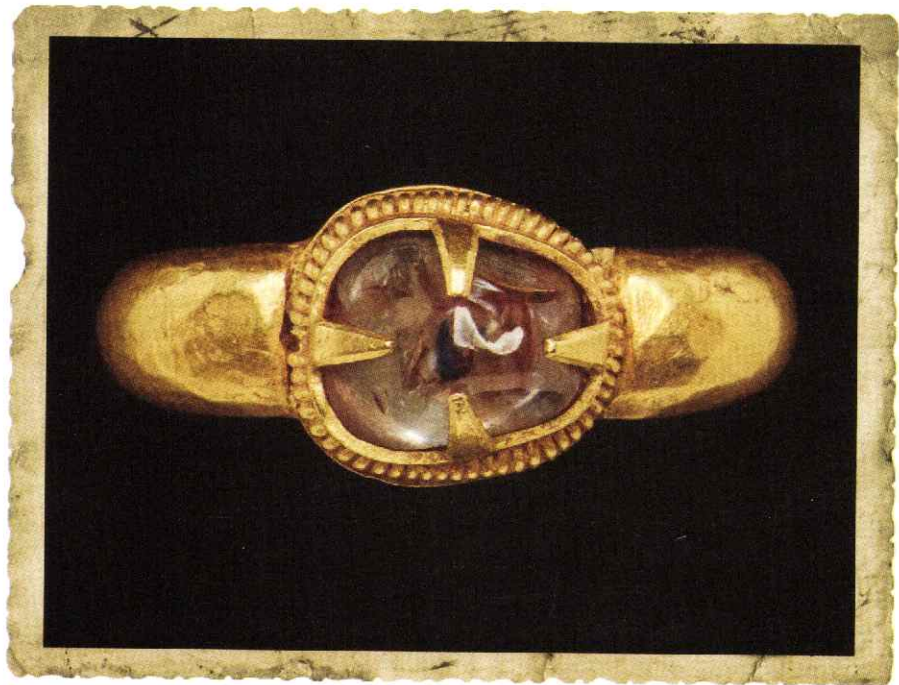
If its wearer were Hindu, this heavy gold ring had immense symbolism. In the Hindu myth of creation, Brahma, the creator of the universe, was born from an egg of gold. Brahma then created the universe from a golden embryo. For these reasons, it was believed that the more gold a person wore, the more a person's body actually reflected the light of creation. This would prepare the soul for a superior reincarnation in one's following life. Wearing a ring like this meant leaving nothing to chance when passing on.

Hindu myths also tell us that in preparation for the genesis of humanity, the god Vishnu grew a lotus out of his navel. Brahma then divided this lotus into the heavens, earth and sky. The lotus flower was a central symbol in the story of creation.

This gold lotus ring could also have originated from a Buddhist tradition. If the wearer were Buddhist, this lotus flower ring would have had a different, yet still substantial, meaning. For Buddhists, the lotus flower is sacred. The life cycle of the lotus is a metaphor for resilience and personal evolution. To imagine this, we have to understand the life cycle of the lotus itself.

A lotus plant is seeded and takes root under waters that are typically muddy and dark, where the blueprint for the plant is prepared. The lotus plant then grows up from the murky marsh into a tall, elegant, and regal flower. The lotus may appear to some as fragile or weak, when, in reality, it is strong. This golden ring would have been a symbol of the wearer's ability to overcome obstacles to achieve whatever treasures one sought in life.

For Buddhists, the color of a lotus flower adds additional implications. A pink lotus signals that there is important historical significance. A red lotus



This gold ring in our treasure is from the Khmer Empire during the 9th to 15th centuries AD. It has some heft. It is the largest of our rings, weighing more than 1.25 ounces. Its centerpiece gem is a mysterious bluish pink. This stone is most likely a pink sapphire.